



STECCA™ FIN BALUSTRADE SYSTEM

NEW TO THE JURALCO BALUSTRADE RANGE

The Stecca™ Balustrade System by Juralco is the latest addition to our premium range of balustrades. Designed to be a postless system, the Stecca fins come in sections for a continuous, integrated, modern design that will perform and provide sleek aesthetic appeal on any architecturally designed building.

+ CONTINUOUS FIN DESIGN

Designed with the idea that there can be a continuous, unbroken, system for a visually appealing aluminium balustrade without compromise.

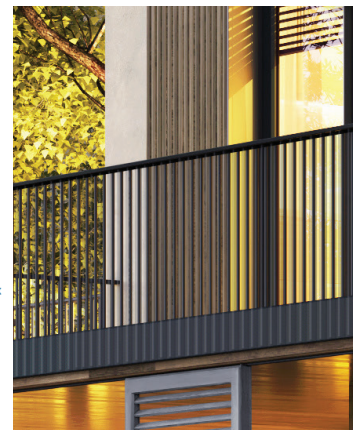
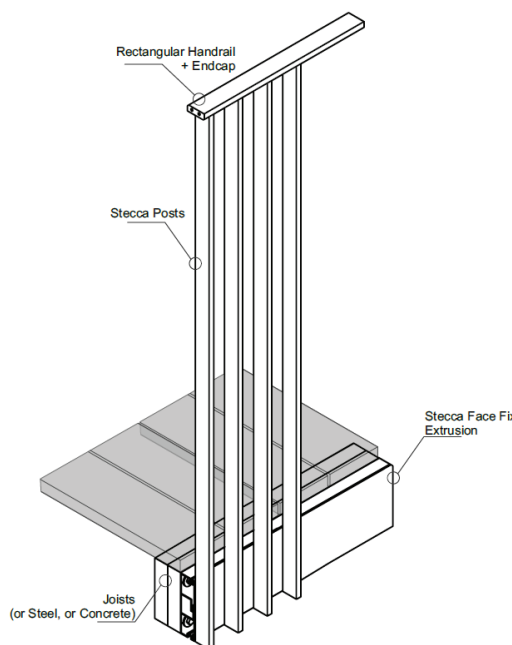
Stecca™ utilises a built in handrail, for the ultimate low profile look.

Interlinking handrails can also be mounted directly to the fins when needed for stairways.

+ PRE-ASSEMBLED

Coming partly pre-assembled is both a benefit for installation and the end user, reducing build time and meaning that the system comes perfectly uniform every time.

The Stecca™ system is installed using 2.9m sections enabling excellent installation of the channel, spanning over any imperfections in the deck or balcony face.



+ TIMELESS DURABILITY

The Stecca™ system has a design appeal that will pass the test of time, and is made with highly durable 6060 T5 aluminium that is powder coated using your choice of high quality Dulux colours.

+ VERSATILE SYSTEM

Stecca™ is a premium aluminium system that can be installed on almost any structure, including timber, concrete, steel, and block; making it ideal in a wide variety of solutions from single dwellings and townhouses, all the way through to multi-level apartment buildings.